

m e n , i d e a s , t e c h n o l o g i e s



*metal detector*  
**metal detector**  
*metal detector*

**MDT09/11**





## metal detector

MDT09/11

### Technical specifications

- Power supply 230V 50/60Hz single-phase
- Power 150 W
- Version Stainless steel IP65

### Description MDT09

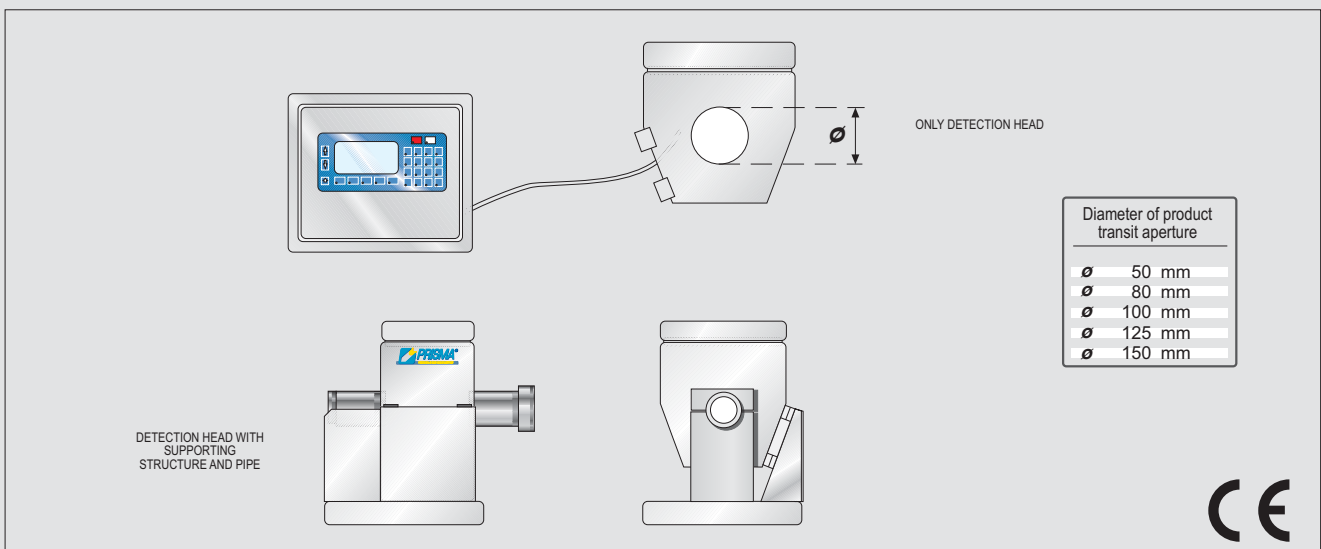
- Principle of operation: digital with bidimensional image
- N. of programs 100
- Operator panel 2x16 characters, 4 keys
- RS232 serial interface
- Alphanumeric data entry
- Self-check function
- Phase adjustment function
- Automatic product compensation (tracking)
- Reject check performed photocell (optional)
- Function and process alarm output
- OK pcs. and rejects totalizer
- Report archive
- Modifiable password for access to settings
- Date/time function
- Image printing
- Total printouts
- Separated electronic equipment
- Conformity with standards ISO-FDA-HACCP
- Stainless steel IP65 - IP67

### Accessories

- Pipe in inert material
- Valve for the deviation of contaminated product

### Description MDT11

- Principle of operation: digital with bidimensional image
- N. of programs 100
- Operator panel graphic display, alphanumeric keypad
- Product image display
- RS232 serial interface
- Setup for network
- Alphanumeric data entry
- Self-check function
- Phase adjustment function
- Automatic product compensation (tracking)
- Reject check performed photocell (optional)
- Function and process alarm output
- OK pcs. and rejects totalizer
- Report archive
- Modifiable password for access to settings
- Date/time function
- Image printing
- Total printouts
- Separated electronic equipment
- Conformity with standards ISO-FDA-HACCP
- Stainless steel IP65 - IP67



© 2002 - 2005 PRISMA INDUSTRIALE - REV 09/2005



Prisma Industriale S.r.l.

• Via La Bionda, 17 - 43036 Fidenza - Parma - Italy • Tel. +39 0524 527270 - Fax +39 0524 524142  
 • www.prismaindustriale.com • info@prismaindustriale.com

Data appearing in this brochure may be modified without prior warning.  
 The machine used in this document is with all options